

WESTSHORE CORPORATE CENTER

600 North Westshore Boulevard
Tampa, Florida 33609



Westshore Corporate Center

Westshore Corporate Center

Property Description

Westshore Corporate Center is a 12-story, class-A, 167,537 square foot suburban office building. The typical floor size is approximately 15,000 square feet. Building amenities include lush landscaping, beautifully appointed lobbies and restrooms, covered reserved, non-reserved and surface parking, covered walkways, on-site bank, restaurants, meeting areas and after hours security seven days a week. Exceptional interstate signage opportunities are available.

Area Description

Westshore Corporate Center is located at the intersection of I-275 and Westshore Boulevard with immediate access to major Bay Area bridges. Westshore Corporate Center is near shopping malls, restaurants, hotels and the airport.

Owners, Leasing and Management

Westshore Corporate Center is owned and operated by America's Capital Partners, *ACP Realty Services, LLC*, Florida's largest owner of commercial office properties.



WESTSHORE CORPORATE CENTER

600 North Westshore Boulevard
Tampa, Florida 33609



Westshore Corporate Center



Building lobby



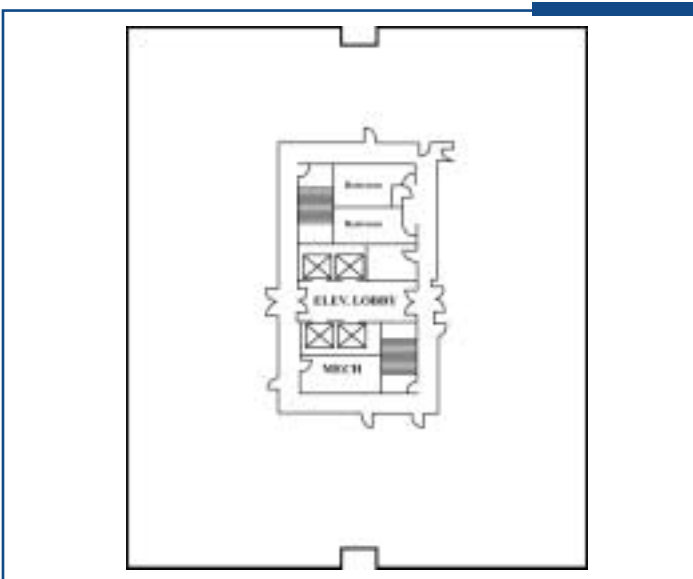
Tenant suite



Tenant lobby



Aerial view



Typical Floor Plate



Aerial view of Westshore Corporate Center

